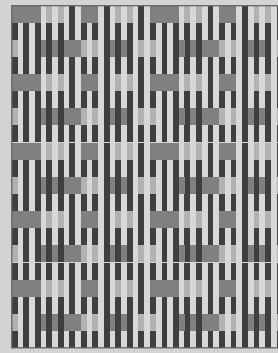
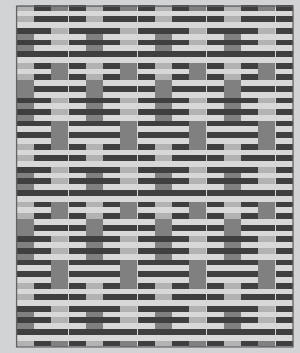


MURAL Reed

1/8" - 3/16" GROUT LINE



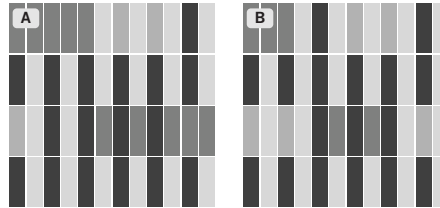
HORIZONTAL INSTALLATION



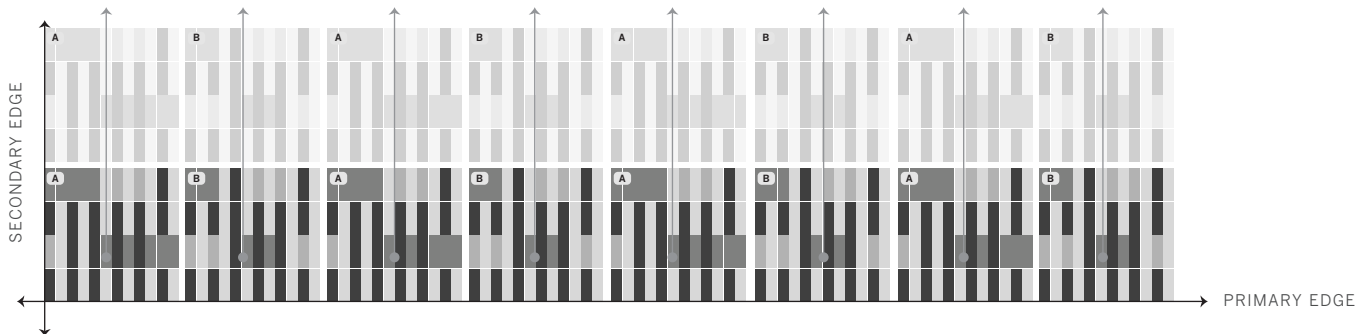
VERTICAL INSTALLATION

REED MODULE BY THE SHEET

THE COMPLETE REED MODULE IS CREATED BY JOINING TWO UNIQUE SHEETS END-TO-END AS SHOWN. EACH FACE-MOUNTED SHEET IS LABELED IN THE UPPER LEFT CORNER WITH A OR B. THE PATTERN IS CREATED BY REPEATING THE REED MODULE TO DESIRED HEIGHT OR WIDTH.



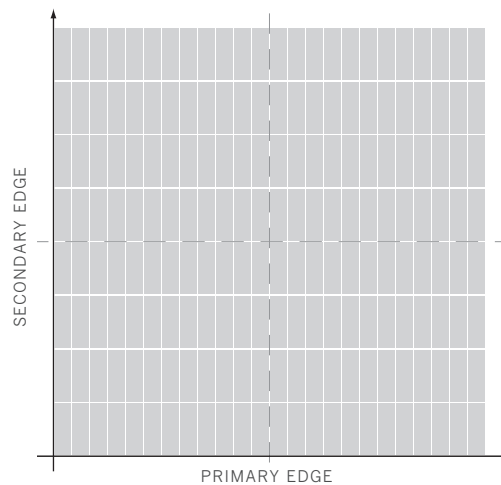
HOW TO START



SELECT A HORIZONTAL OR VERTICAL ORIENTATION AND PRIMARY EDGE. A HORIZONTAL ORIENTATION WILL HAVE A HORIZONTAL PRIMARY EDGE. LAY OUT SHEETS IN A-B-A-B ORDER ALONG THE PRIMARY EDGE OF YOUR INSTALLATION. REPEAT A-B SHEETS TO THE OPPOSITE EDGE OF YOUR INSTALLATION TO MAKE THE FIRST ROW. REPEAT THIS FIRST ROW TO HEIGHT OR WIDTH OF INSTALLATION.

GENERAL INSTALLATION GUIDELINES

- REGARDLESS OF ORIENTATION, DETERMINE YOUR PRIMARY GRID LINES. IT IS IMPORTANT TO KEEP THE PRIMARY GRID LINES STRAIGHT AND ALIGNED THROUGHOUT THE INSTALLATION.
- LAY OUT MODULES TO CONSTRUCT YOUR PATTERN. CUT THROUGH MOUNTING TAPE TO MAKE ADJUSTMENTS AS YOU GO.



- CORRECTIONS OF INDIVIDUAL TILES WITHIN FACE-MOUNTED SHEETS MAY BE NECESSARY. SAVE EXCESS EDGE TILES CUT FROM SHEETS TO FILL IN OPPOSING EDGES LATER.

