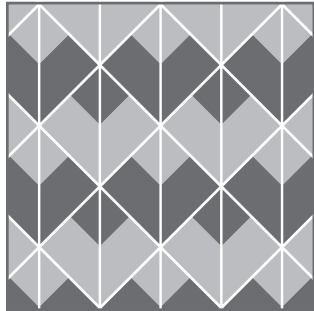
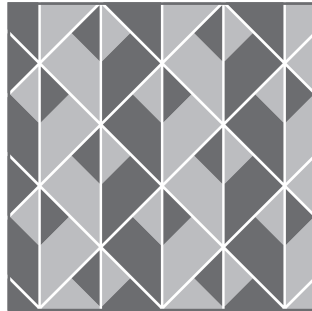


Dual Glaze Triangles Install Guides

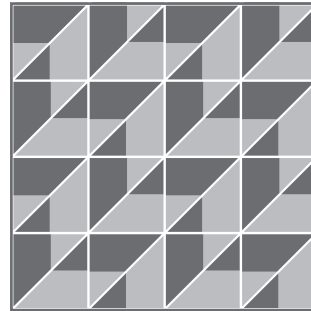
8 Set Patterns, 8 Glaze Combinations



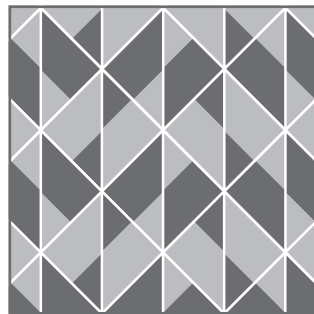
Ripple



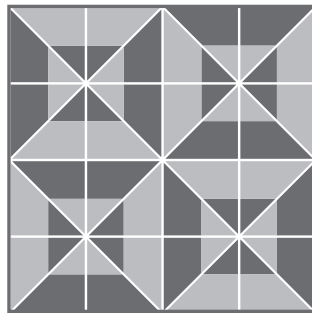
Deco



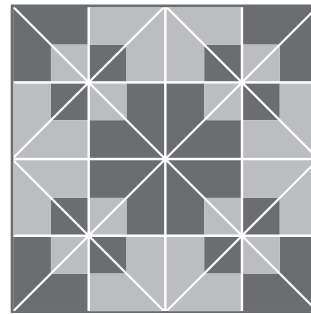
Braid



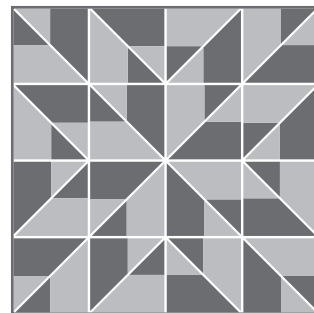
Curtain



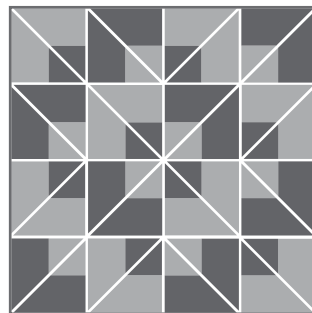
Heirloom



Tartan



Facet



Kilim



Dual Glaze Triangles: Ripple Pattern

Complexity: Low

1/8" - 3/16" grout line recommended



Before You Begin

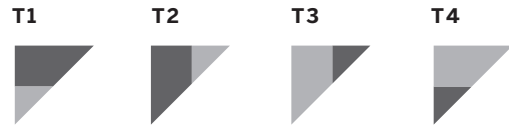
This tile collection is intended to be installed as a pattern and requires a detailed approach best done by a tile professional.

The handmade nature of these tiles means the glaze will have variation in color and texture. We suggest laying out as large of an area of your pattern as possible before setting any tiles, so that you may evenly blend the natural variation throughout your installation area. This will also allow you to check that the pattern comes together properly.

Pattern Components


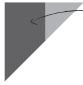

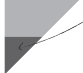
Your tile order will come in boxes of **T1, T2, T3,** and **T4** tile. We highly encourage making a master set of these four tiles—they are easiest to identify when the 90° corner is kept consistently in the top left. Use the quick guide below to identify tile, and keep them for reference as you work.

QUICK GUIDE



All patterns are made up of equal quantities of these 4 tile components (T1-T4).

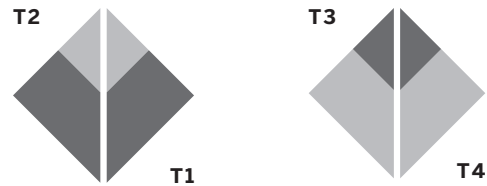
Identifying Tiles

- T1**  The **larger portion** of glaze overlay is located on the **top side** of the tile.
- T2**  The **larger portion** of glaze overlay is located on the **left side** of the tile.
- T3**  The **smaller portion** of glaze overlay is located on the **right side** of the tile.
- T4**  The **smaller portion** of glaze overlay is located on the **bottom side** of the tile.

Step 1

Once the tile is sorted by T1, T2, T3 and T4, the pattern begins with two main building blocks: **T1/T2** tiles, and **T3/T4** tiles.

These triangles will continually be grouped to form the squares to the right, and used to build the larger pattern unit.



Dual Glaze Triangles: Ripple Pattern

Complexity: Low

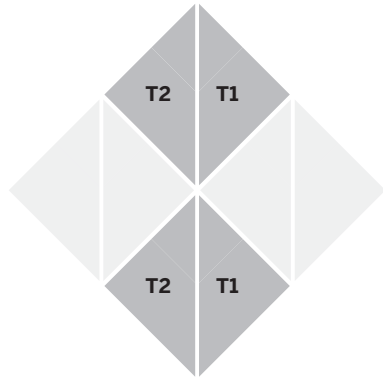


1/8" - 3/16" grout line recommended

Step 2

To start building the pattern unit, use the **T1/T2** block from Step 1. The **T1/T2** unit repeats above and below.

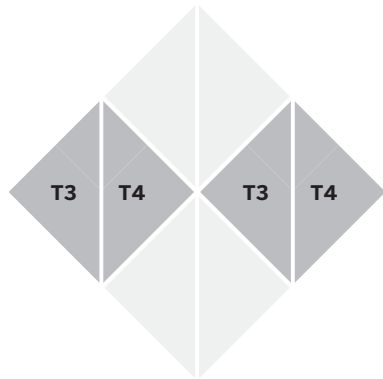
The full pattern unit contains 2 of the same sections, they are in adjacent corners from each other.



Step 3

To complete the pattern unit, use the **T3/T4** block from Step 1. The **T3/T4** unit also repeats above and below.

The full pattern unit contains 2 of the same sections, they are in adjacent corners from each other.



Dual Glaze Triangles: Ripple Pattern

Complexity: Low

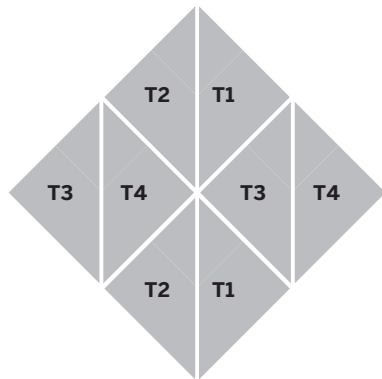
1/8" - 3/16" grout line recommended



Step 4

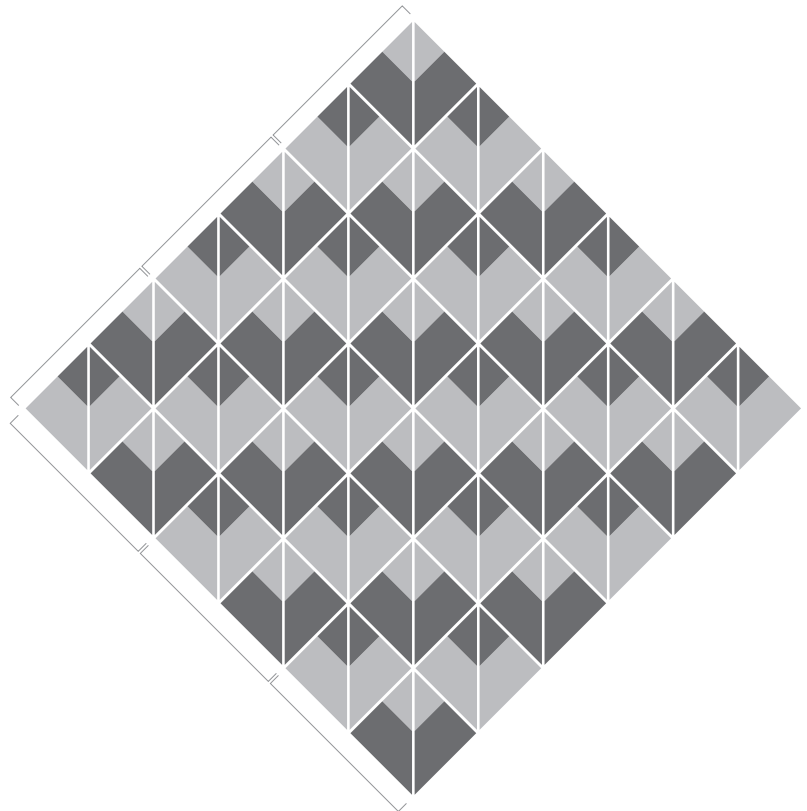
Equal amounts of **T1/T2** and **T3/T4** are used to complete one pattern unit. Orientation stays consistent.

The full pattern unit is repeated on all sides to complete the installation. **8 tiles** complete one pattern unit.



3x3 Pattern Units

Another way to visualize the pattern is to see **alternating columns and rows** of **T2/T1** and **T3/T4** tile.



Dual Glaze Triangles Install Guide



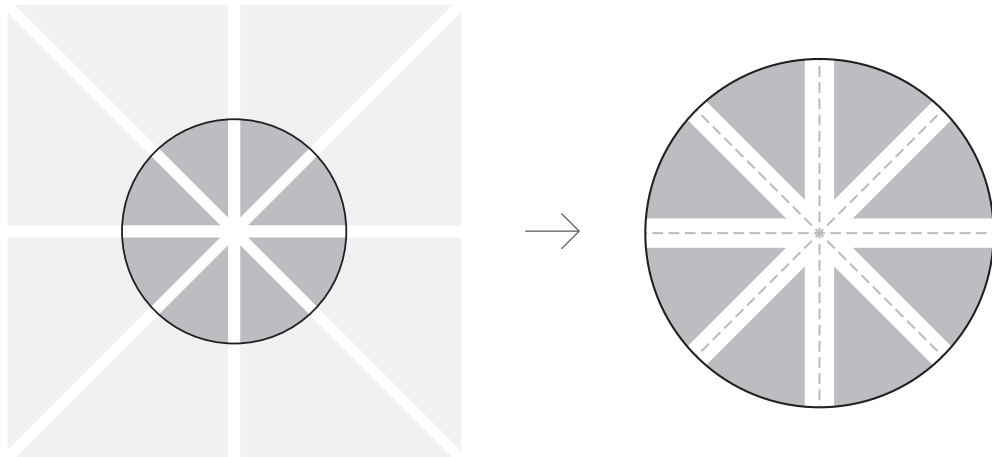
$\frac{1}{8}$ " – $\frac{3}{16}$ " grout line recommended

Starting Your Grid

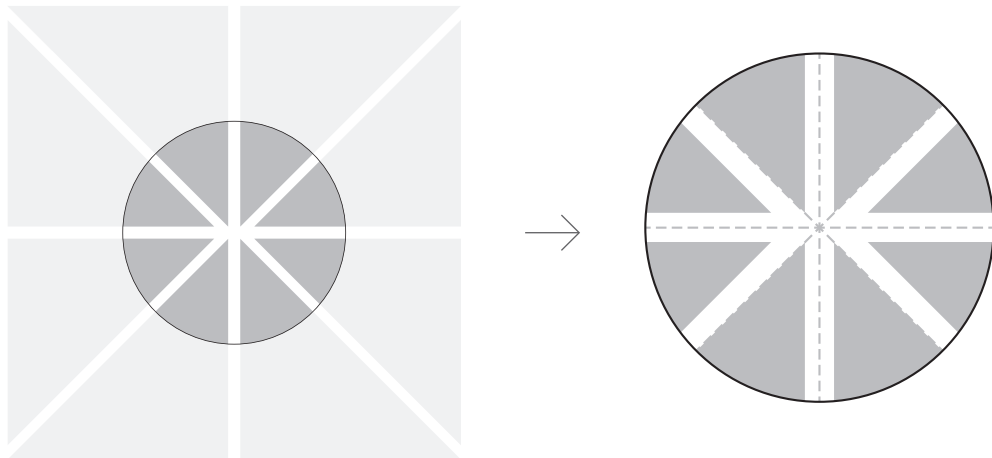
Triangles require a consistent spacing around the corners to maintain your grout lines.

Select a horizontal or vertical orientation, and determine your primary grout lines. It is important to keep the primary lines straight and aligned throughout the installation.

Correct



Incorrect





Dual Glaze Triangles: Deco Pattern

Complexity: Medium

1/8" - 3/16" grout line recommended



Before You Begin

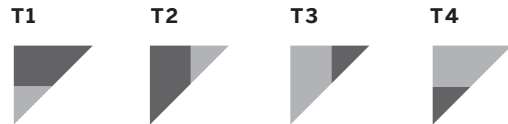
This tile collection is intended to be installed as a pattern and requires a detailed approach best done by a tile professional.

The handmade nature of these tiles means the glaze will have variation in color and texture. We suggest laying out as large of an area of your pattern as possible before setting any tiles, so that you may evenly blend the natural variation throughout your installation area. This will also allow you to check that the pattern comes together properly.

Pattern Components


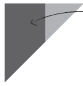

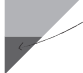
Your tile order will come in boxes of **T1, T2, T3, and T4** tile. We highly encourage making a master set of these four tiles—they are easiest to identify when the 90° corner is kept consistently in the top left. Use the quick guide below to identify tile, and keep them for reference as you work.

QUICK GUIDE



All patterns are made up of equal quantities of these 4 tile components (T1-T4).

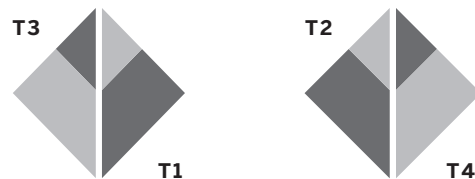
Identifying Tiles

- T1**  The **larger portion** of glaze overlay is located on the **top side** of the tile.
- T2**  The **larger portion** of glaze overlay is located on the **left side** of the tile.
- T3**  The **smaller portion** of glaze overlay is located on the **right side** of the tile.
- T4**  The **smaller portion** of glaze overlay is located on the **bottom side** of the tile.

Step 1

Once the tile is sorted by T1, T2, T3 and T4, the pattern begins with two main building blocks: **T3/T1** tiles, and **T2/T4** tiles.

These triangles will continually be grouped to form the squares to the right, and used to build the larger pattern unit.



Dual Glaze Triangles: Deco Pattern

Complexity: Medium

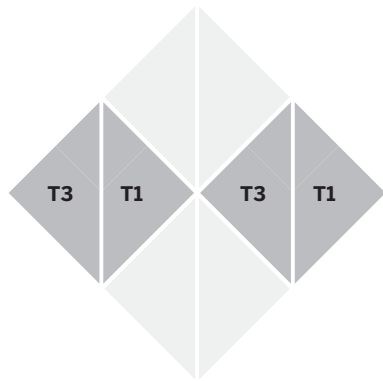


1/8" - 3/16" grout line recommended

Step 2

To start building the pattern unit, use the **T3/T1** block from Step 1. The **T3/T1** unit repeats twice.

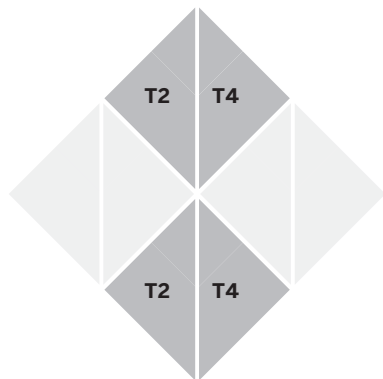
The full pattern unit contains 2 of the same sections, they are in adjacent corners from each other.



Step 3

To complete the pattern unit, use the **T2/T4** block from Step 1. The **T2/T4** unit repeats twice.

The full pattern unit contains 2 of the same sections, they are in adjacent corners from each other.



Dual Glaze Triangles: Deco Pattern

Complexity: Medium

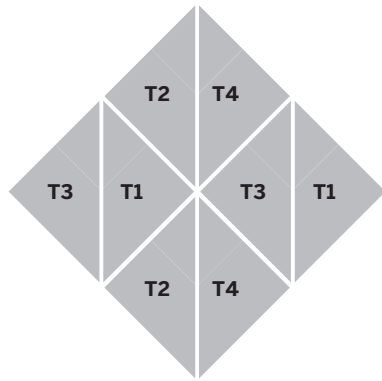


1/8" - 3/16" grout line recommended

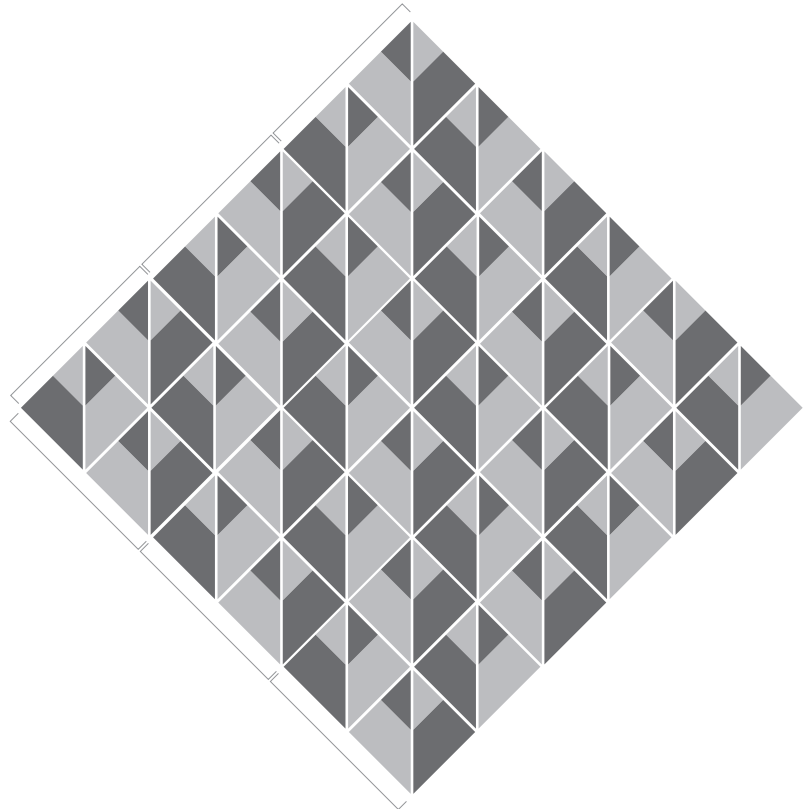
Step 4

Equal amounts of T3/T1 and T2/T4 are used to complete one pattern unit. Orientation stays consistent.

The full pattern unit is repeated on all sides to complete the installation. **8 tiles** complete one pattern unit.



3x3 Pattern Units



Dual Glaze Triangles Install Guide



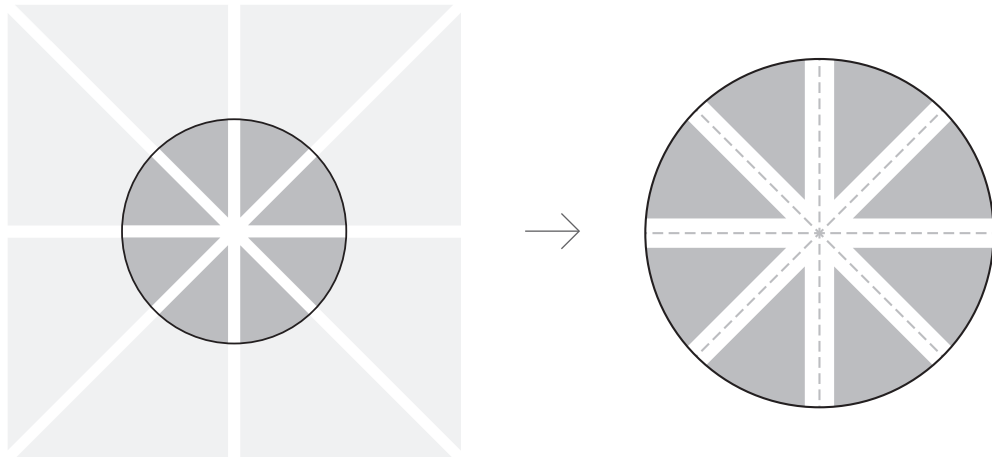
$\frac{1}{8}$ " – $\frac{3}{16}$ " grout line recommended

Starting Your Grid

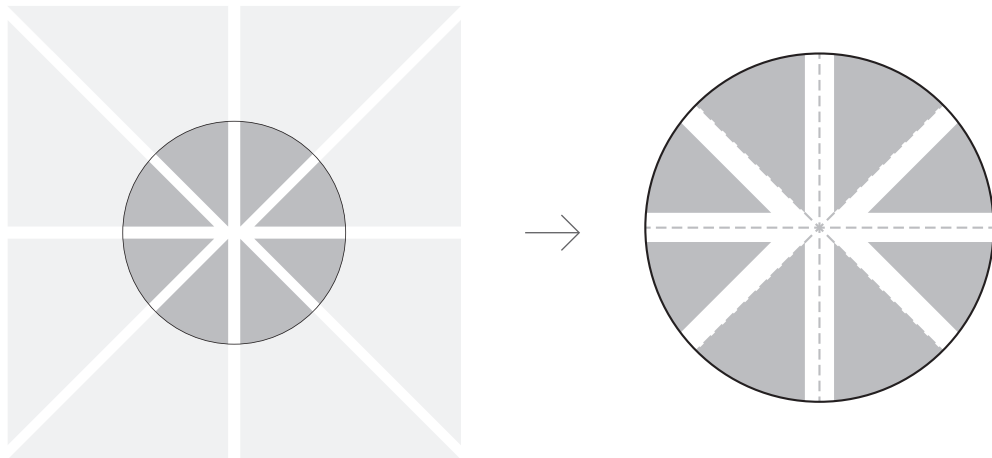
Triangles require a consistent spacing around the corners to maintain your grout lines.

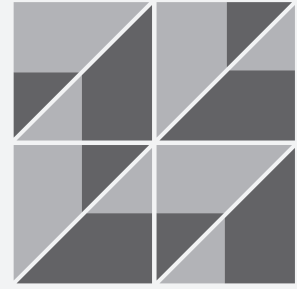
Select a horizontal or vertical orientation, and determine your primary grout lines. It is important to keep the primary lines straight and aligned throughout the installation.

Correct



Incorrect





Dual Glaze Triangles: Braid Pattern

Complexity: Medium

1/8" - 3/16" grout line recommended

Before You Begin

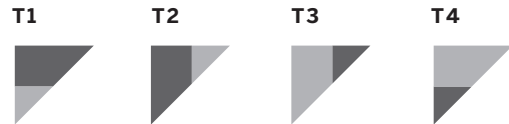
This tile collection is intended to be installed as a pattern and requires a detailed approach best done by a tile professional.

The handmade nature of these tiles means the glaze will have variation in color and texture. We suggest laying out as large of an area of your pattern as possible before setting any tiles, so that you may evenly blend the natural variation throughout your installation area. This will also allow you to check that the pattern comes together properly.

Pattern Components




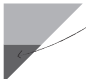
Your tile order will come in boxes of **T1, T2, T3,** and **T4** tile. We highly encourage making a master set of these four tiles—they are easiest to identify when the 90° corner is kept consistently in the top left. Use the quick guide below to identify tile, and keep them for reference as you work.

QUICK GUIDE



All patterns are made up of equal quantities of these 4 tile components (T1-T4).

Identifying Tiles

- T1**  The **larger portion** of glaze overlay is located on the **top side** of the tile.
- T2**  The **larger portion** of glaze overlay is located on the **left side** of the tile.
- T3**  The **smaller portion** of glaze overlay is located on the **right side** of the tile.
- T4**  The **smaller portion** of glaze overlay is located on the **bottom side** of the tile.

Step 1

Once the tile is sorted by T1, T2, T3 and T4, the pattern begins with two main building blocks: **T1/T3** tiles, and **T2/T4** tiles.

These triangles will continually be grouped to form the squares to the right, and used to build the larger pattern unit.



Dual Glaze Triangles: Braid Pattern

Complexity: Medium

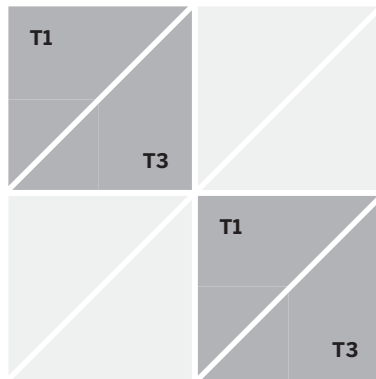


1/8" - 3/16" grout line recommended

Step 2

To start building the pattern unit, use the **T1/T3** block from Step 1. The **T1/T3** unit repeats twice.

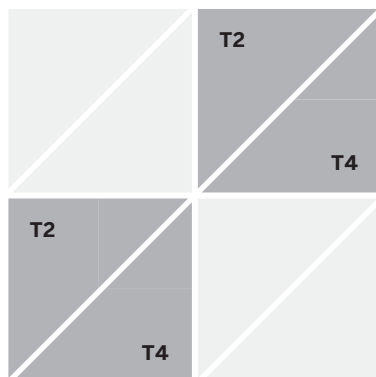
The full pattern unit contains 2 of the same sections, they are in adjacent corners from each other.



Step 3

To complete the pattern unit, use the **T2/T4** block from Step 1. The **T2/T4** unit repeats twice.

The full pattern unit contains 2 of the same sections, they are in adjacent corners from each other.



Dual Glaze Triangles: Braid Pattern

Complexity: Medium

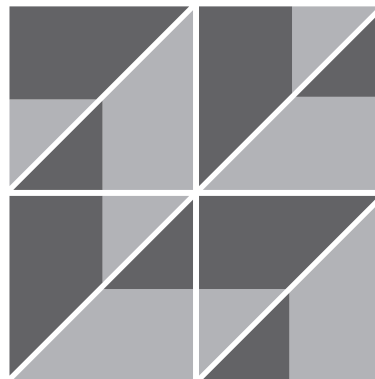
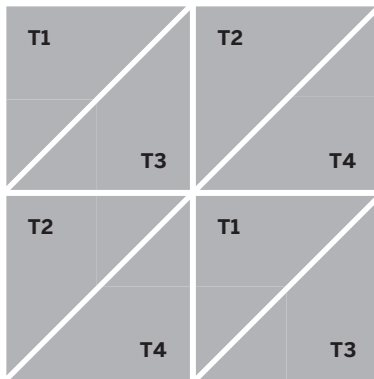


1/8" - 3/16" grout line recommended

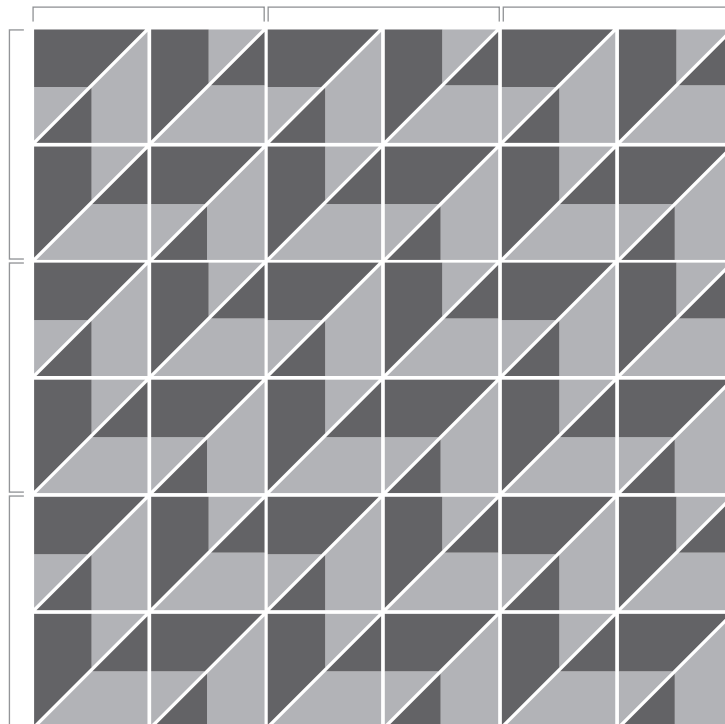
Step 4

Equal amounts of T1/T3 and T2/T4 are used to complete one pattern unit. Orientation stays consistent.

The full pattern unit is repeated on all sides to complete the installation. **8 tiles** complete one pattern unit.



3x3 Pattern Units



Dual Glaze Triangles Install Guide



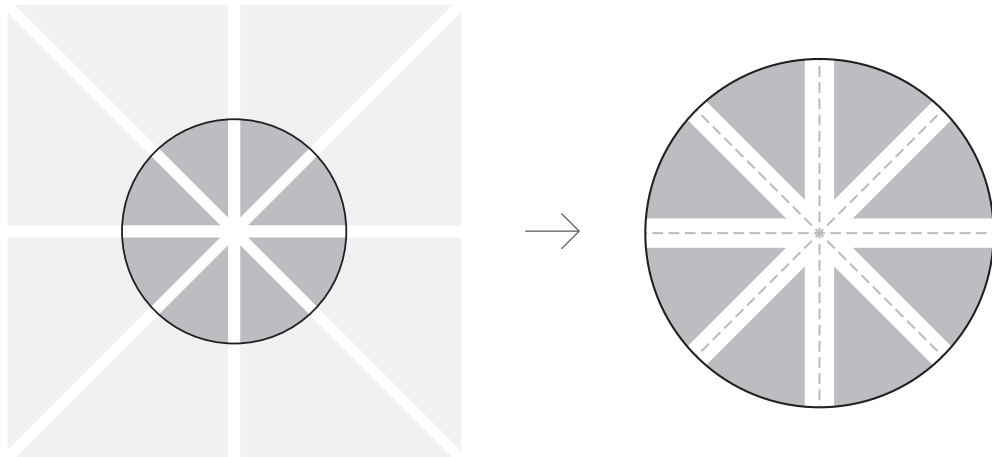
$\frac{1}{8}$ " – $\frac{3}{16}$ " grout line recommended

Starting Your Grid

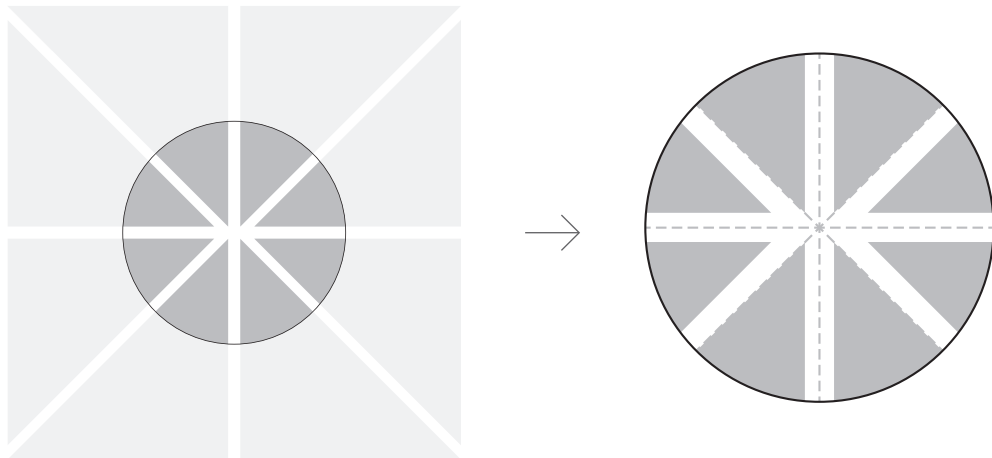
Triangles require a consistent spacing around the corners to maintain your grout lines.

Select a horizontal or vertical orientation, and determine your primary grout lines. It is important to keep the primary lines straight and aligned throughout the installation.

Correct



Incorrect





Dual Glaze Triangles: Curtain Pattern

Complexity: Medium

1/8" - 3/16" grout line recommended

Before You Begin

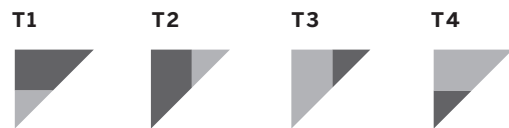
This tile collection is intended to be installed as a pattern and requires a detailed approach best done by a tile professional.

The handmade nature of these tiles means the glaze will have variation in color and texture. We suggest laying out as large of an area of your pattern as possible before setting any tiles, so that you may evenly blend the natural variation throughout your installation area. This will also allow you to check that the pattern comes together properly.

Pattern Components


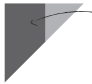

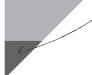
Your tile order will come in boxes of **T1, T2, T3,** and **T4** tile. We highly encourage making a master set of these four tiles—they are easiest to identify when the 90° corner is kept consistently in the top left. Use the quick guide below to identify tile, and keep them for reference as you work.

QUICK GUIDE



All patterns are made up of equal quantities of these 4 tile components (T1-T4).

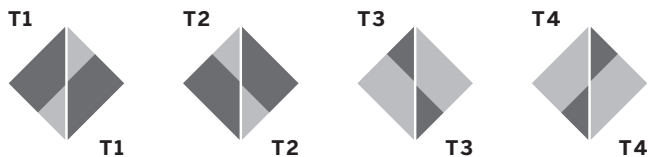
Identifying Tiles

- T1**  The **larger portion** of glaze overlay is located on the **top side** of the tile.
- T2**  The **larger portion** of glaze overlay is located on the **left side** of the tile.
- T3**  The **smaller portion** of glaze overlay is located on the **right side** of the tile.
- T4**  The **smaller portion** of glaze overlay is located on the **bottom side** of the tile.

Step 1

Once the tile is sorted by T1, T2, T3 and T4, the pattern begins with four main building blocks: **T1, T2, T3 and T4** blocks.

These triangles will continually be grouped to form the squares to the right, and used to build the larger pattern unit.



Dual Glaze Triangles: Curtain Pattern

Complexity: Medium

1/8" - 3/16" grout line recommended



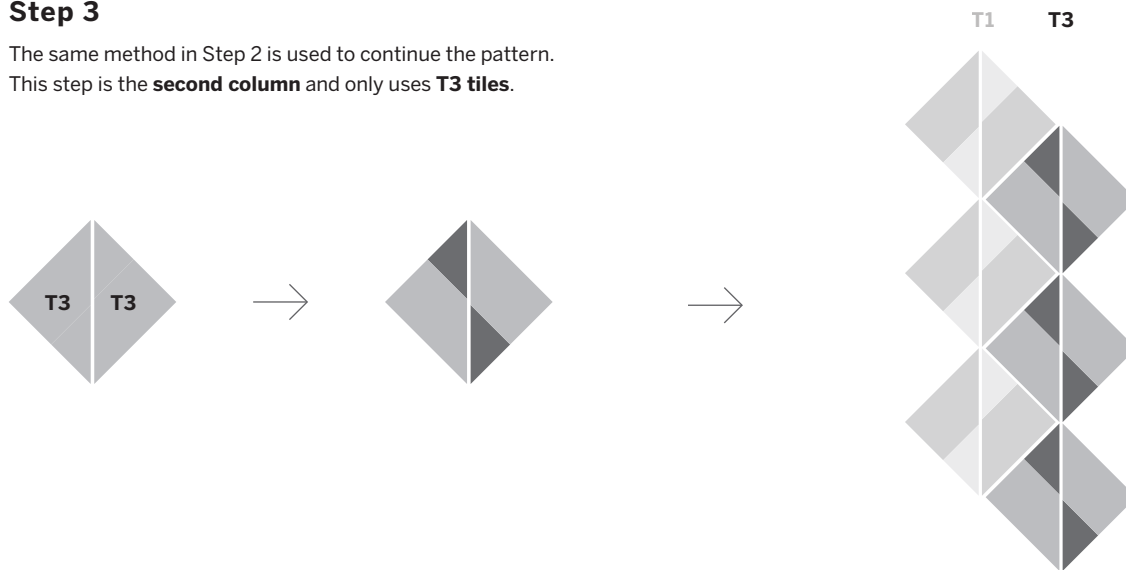
Step 2

To start building the pattern unit, it is important to understand the overall rhythm of how the pattern takes shape with the building blocks from Step 1. This step is the **first column** and only uses **T1 tiles**.



Step 3

The same method in Step 2 is used to continue the pattern. This step is the **second column** and only uses **T3 tiles**.



Dual Glaze Triangles: Curtain Pattern

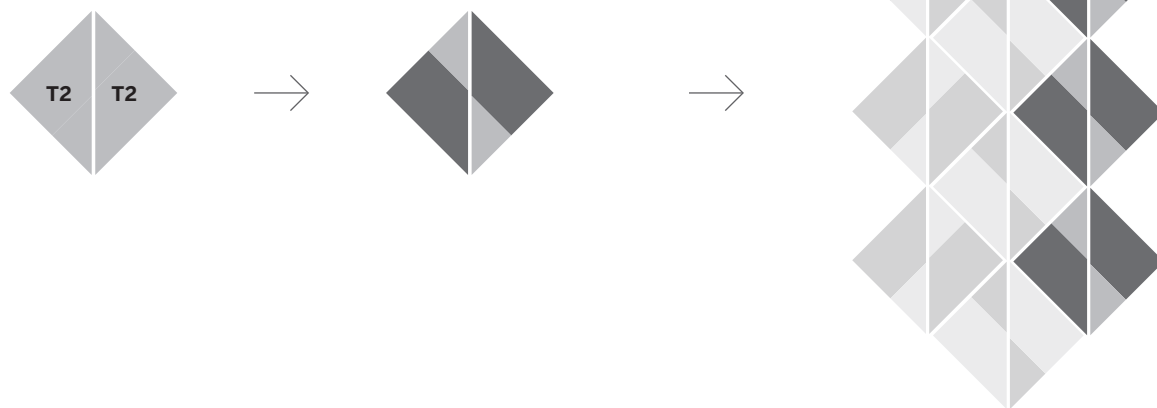
Complexity: Medium

1/8" - 3/16" grout line recommended



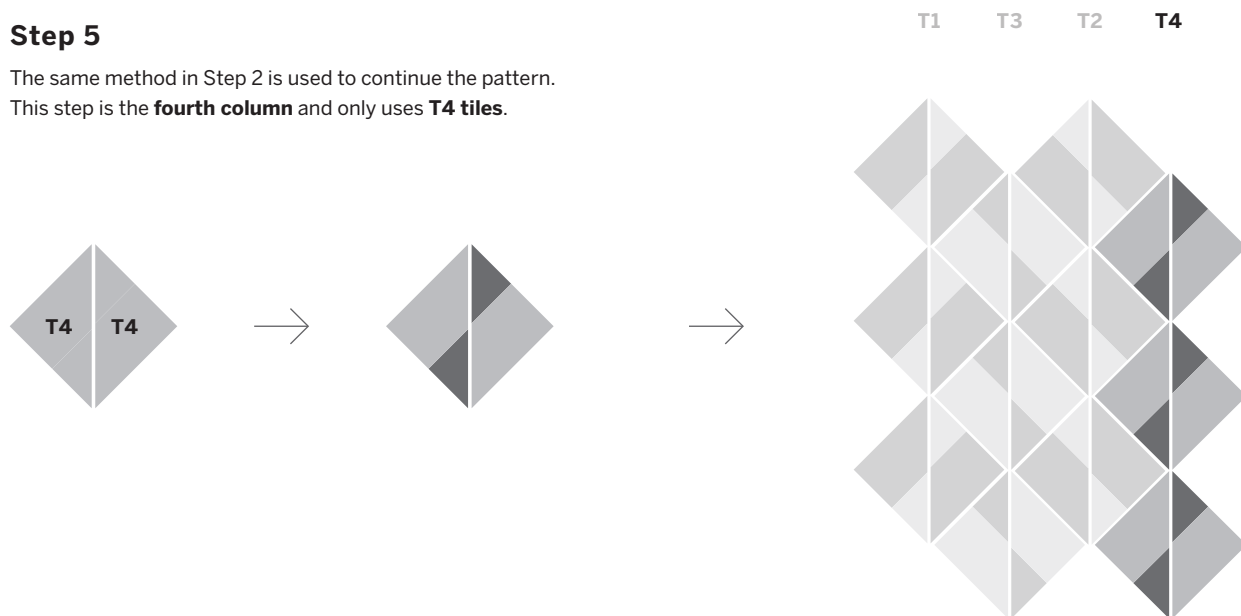
Step 4

The same method in Step 2 is used to continue the pattern.
This step is the **third column** and only uses **T2** tiles.



Step 5

The same method in Step 2 is used to continue the pattern.
This step is the **fourth column** and only uses **T4** tiles.



Dual Glaze Triangles: Curtain Pattern

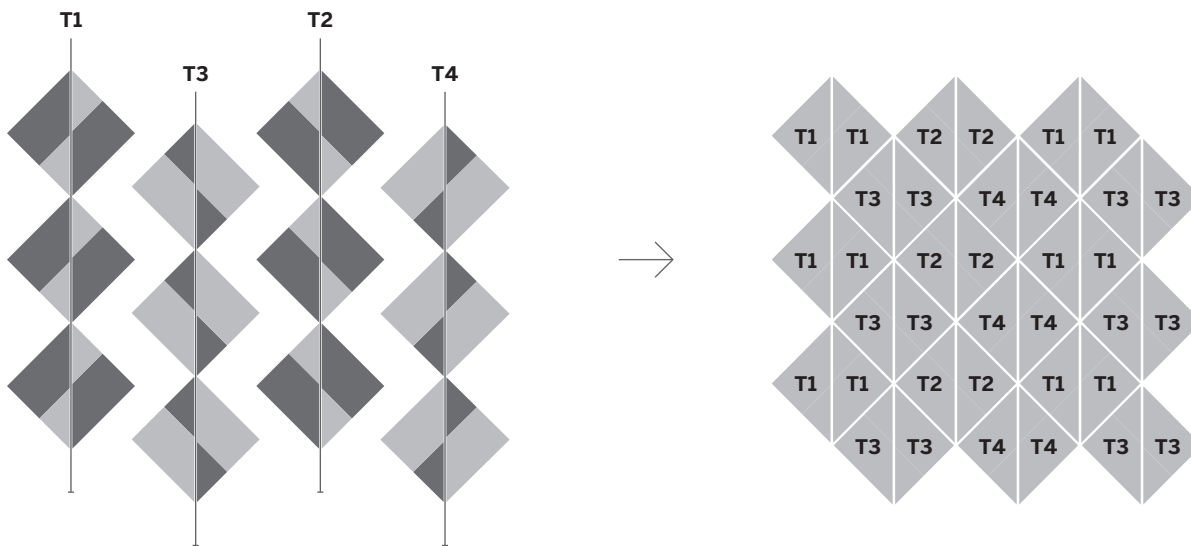
Complexity: Medium



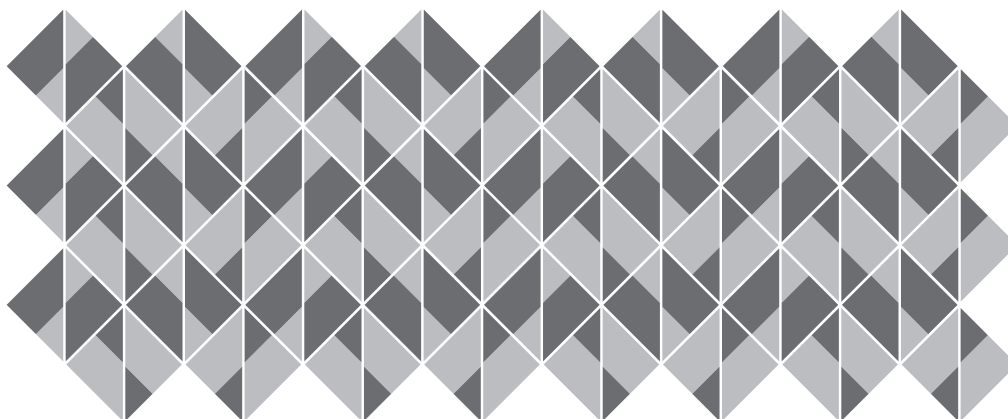
1/8" - 3/16" grout line recommended

Step 6

Complete the pattern unit by repeating columns of **T1**, **T3**, **T2**, and **T4** tile in that specific order. After **T4**, continue again with **T1**.



T1-T4 Columns Repeating 4 Times Across



Dual Glaze Triangles Install Guide



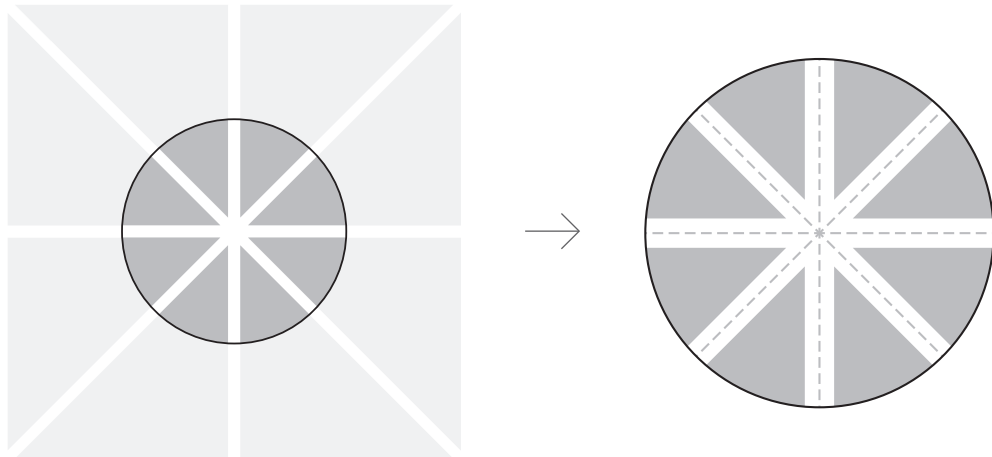
$\frac{1}{8}$ " - $\frac{3}{16}$ " grout line recommended

Starting Your Grid

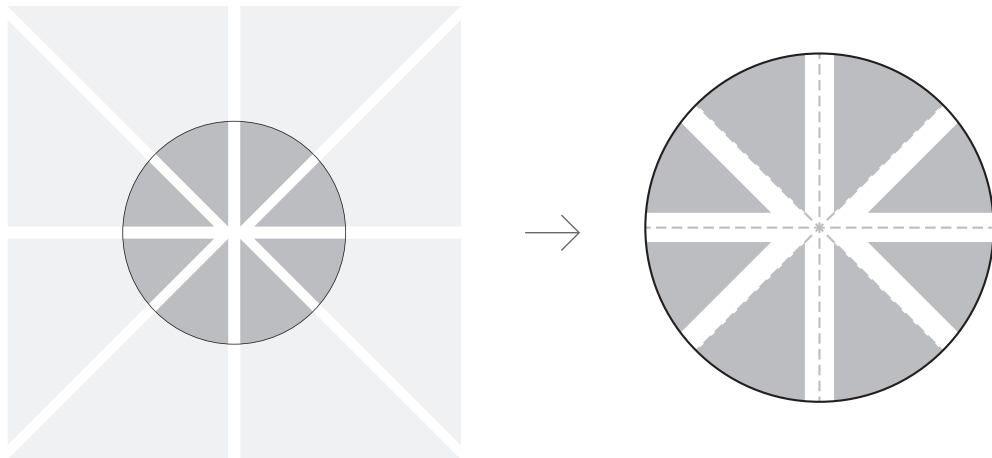
Triangles require a consistent spacing around the corners to maintain your grout lines.

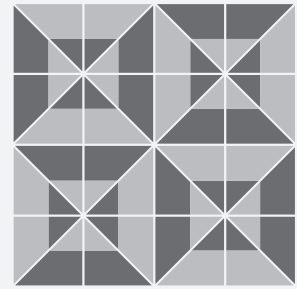
Select a horizontal or vertical orientation, and determine your primary grout lines. It is important to keep the primary lines straight and aligned throughout the installation.

Correct



Incorrect





Dual Glaze Triangles: Heirloom Pattern

Complexity: Medium

1/8" – 3/16" grout line recommended

Before You Begin

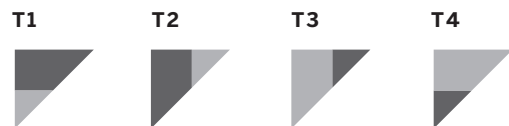
This tile collection is intended to be installed as a pattern and requires a detailed approach best done by a tile professional.

The handmade nature of these tiles means the glaze will have variation in color and texture. We suggest laying out as large of an area of your pattern as possible before setting any tiles, so that you may evenly blend the natural variation throughout your installation area. This will also allow you to check that the pattern comes together properly.

Pattern Components




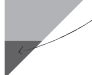
Your tile order will come in boxes of **T1, T2, T3,** and **T4** tile. We highly encourage making a master set of these four tiles—they are easiest to identify when the 90° corner is kept consistently in the top left. Use the quick guide below to identify tile, and keep them for reference as you work.

QUICK GUIDE



All patterns are made up of equal quantities of these 4 tile components (T1–T4).

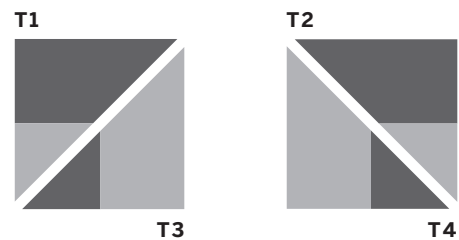
Identifying Tiles

- T1**  The **larger portion** of glaze overlay is located on the **top side** of the tile.
- T2**  The **larger portion** of glaze overlay is located on the **left side** of the tile.
- T3**  The **smaller portion** of glaze overlay is located on the **right side** of the tile.
- T4**  The **smaller portion** of glaze overlay is located on the **bottom side** of the tile.

Step 1

Once the tile is sorted by T1, T2, T3 and T4, the pattern begins with two main building blocks: **T1/T3** tiles, and **T2/T4** tiles.

These triangles will continually be grouped to form the squares to the right, and used to build the larger pattern unit.



Dual Glaze Triangles: Heirloom Pattern

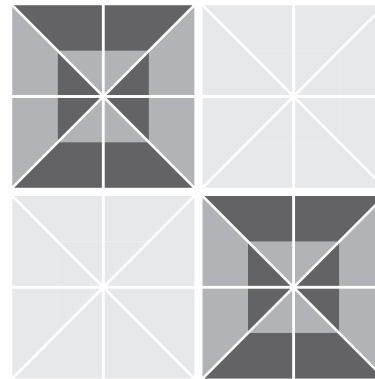
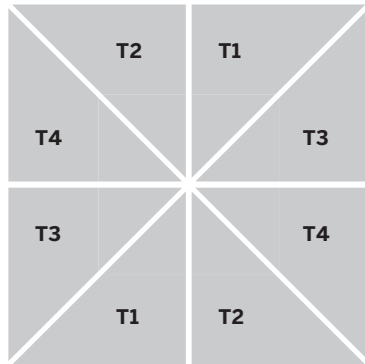
Complexity: Medium



1/8" - 3/16" grout line recommended

Step 2

To start building the pattern unit, use the blocks from Step 1 to build the first section. **T2** and **T1** sit on top here.

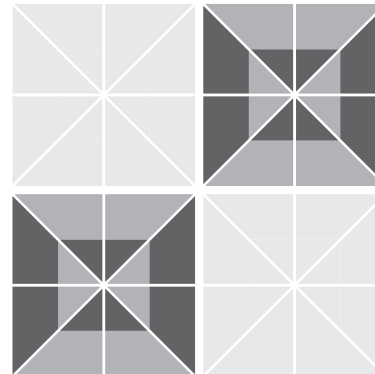
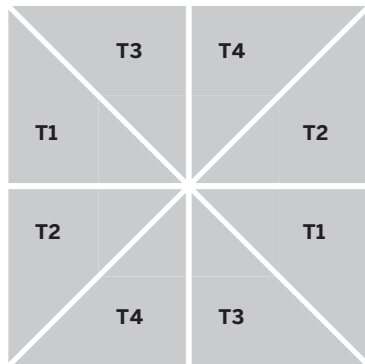


The full pattern unit contains 2 of the same sections, they are in adjacent corners from each other.

Note the order of **T1/T3** and **T2/T4** on the bottom half is opposite that of the top half.

Step 3

This square block is built in the same order as the previous step, but turned 90°. **T3** and **T4** sit on top here.



The full pattern unit contains two of the same sections, they sit in adjacent corners from each other.

Note the order of **T1/T3** and **T2/T4** on the bottom half is opposite that of the top half.

Dual Glaze Triangles: Heirloom Pattern

Complexity: Medium

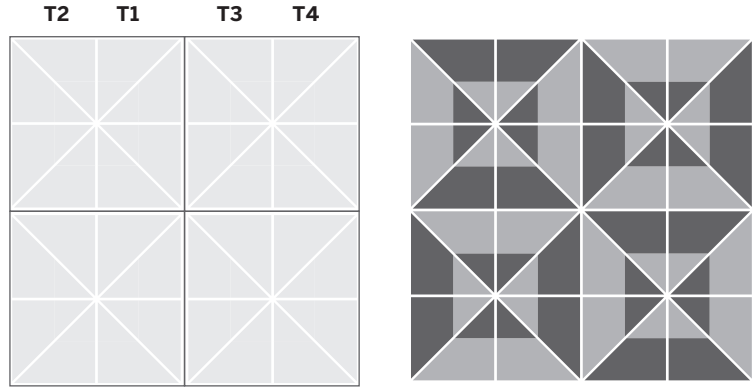


1/8" - 3/16" grout line recommended

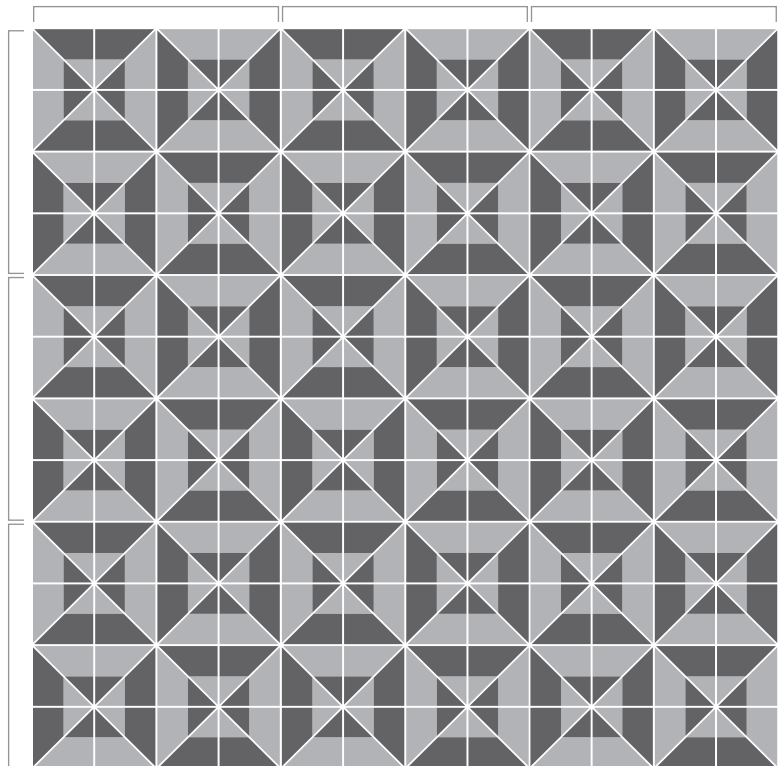
Step 4

A complete pattern unit can be seen as 4 square units, always alternating between having **T2/T1** and **T3/T4** on top of the square units. Continue alternating across the entire installation.

32 tiles complete one pattern unit.



3x3 Pattern Units



Dual Glaze Triangles Install Guide



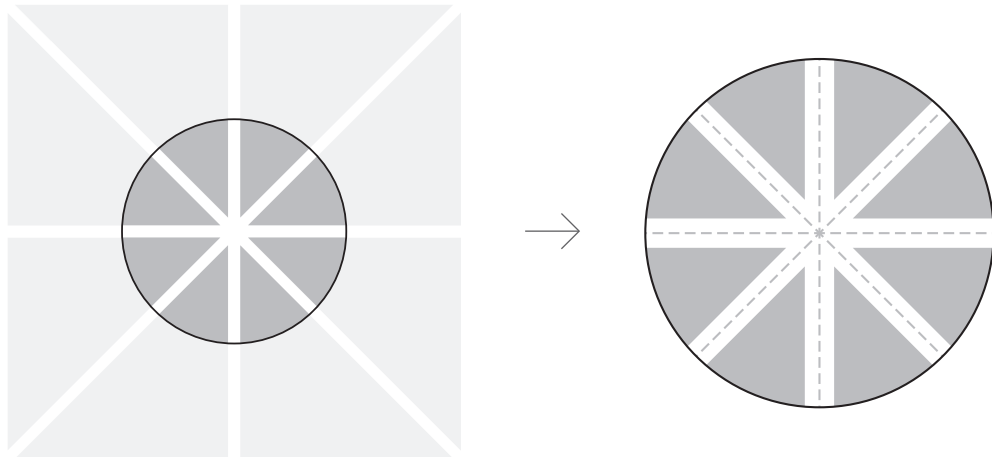
$\frac{1}{8}$ " – $\frac{3}{16}$ " grout line recommended

Starting Your Grid

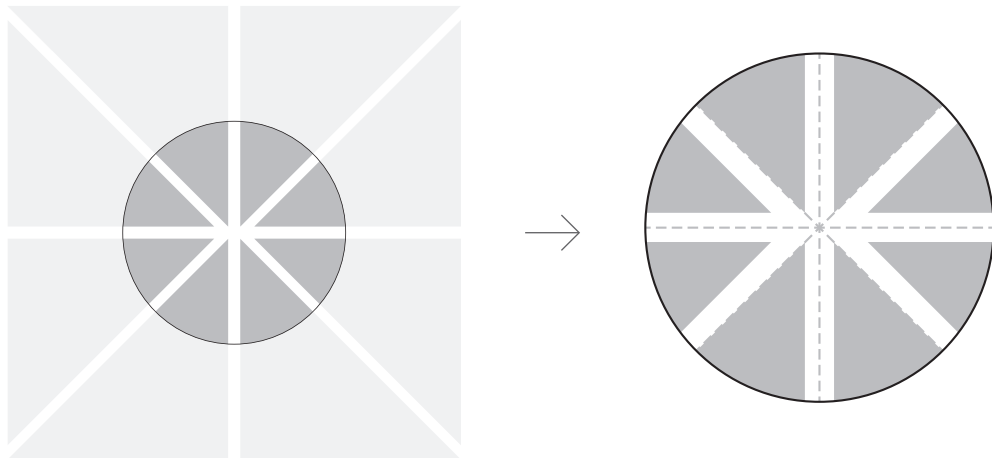
Triangles require a consistent spacing around the corners to maintain your grout lines.

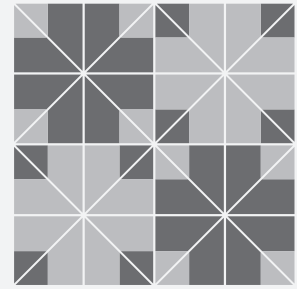
Select a horizontal or vertical orientation, and determine your primary grout lines. It is important to keep the primary lines straight and aligned throughout the installation.

Correct



Incorrect





Dual Glaze Triangles: Tartan Pattern

Complexity: Medium

1/8" - 3/16" grout line recommended

Before You Begin

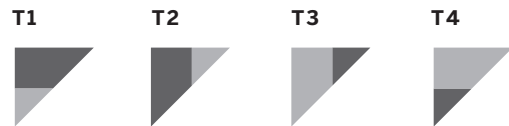
This tile collection is intended to be installed as a pattern and requires a detailed approach best done by a tile professional.

The handmade nature of these tiles means the glaze will have variation in color and texture. We suggest laying out as large of an area of your pattern as possible before setting any tiles, so that you may evenly blend the natural variation throughout your installation area. This will also allow you to check that the pattern comes together properly.

Pattern Components




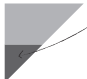
Your tile order will come in boxes of **T1, T2, T3,** and **T4** tile. We highly encourage making a master set of these four tiles—they are easiest to identify when the 90° corner is kept consistently in the top left. Use the quick guide below to identify tile, and keep them for reference as you work.

QUICK GUIDE



All patterns are made up of equal quantities of these 4 tile components (T1-T4).

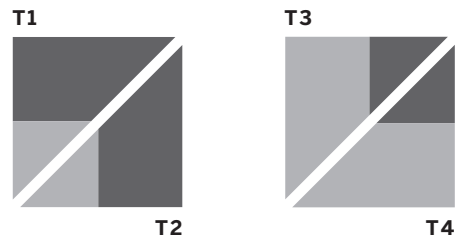
Identifying Tiles

- T1**  The **larger portion** of glaze overlay is located on the **top side** of the tile.
- T2**  The **larger portion** of glaze overlay is located on the **left side** of the tile.
- T3**  The **smaller portion** of glaze overlay is located on the **right side** of the tile.
- T4**  The **smaller portion** of glaze overlay is located on the **bottom side** of the tile.

Step 1

Once the tile is sorted by T1, T2, T3 and T4, the pattern begins with two main building blocks: **T1/T2** tiles, and **T3/T4** tiles.

These triangles will continually be grouped to form the squares to the right, and used to build the larger pattern unit.



Dual Glaze Triangles: Tartan Pattern

Complexity: Medium



1/8" – 3/16" grout line recommended

Step 2

To start building the pattern unit, use the **T1/T2** block from Step 1. The **T1/T2** block repeats twice in the full unit.



A finished **T1/T2** block should look like a large plus sign, with smaller squares in all 4 corners.

Step 3

To complete the pattern unit, use the **T3/T4** block from Step 1. The **T3/T4** block repeats twice in the full unit.



A finished **T3/T4** block should look like a large plus sign, with smaller squares in all 4 corners.

Dual Glaze Triangles: Tartan Pattern

Complexity: Medium



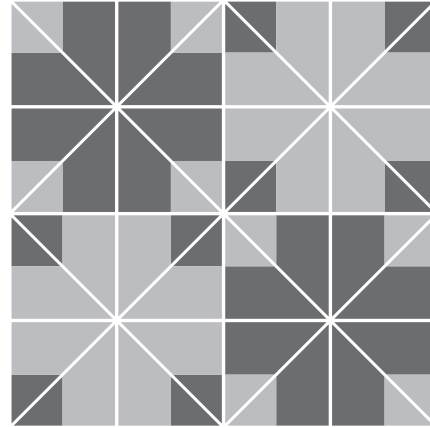
1/8" – 3/16" grout line recommended

Step 4

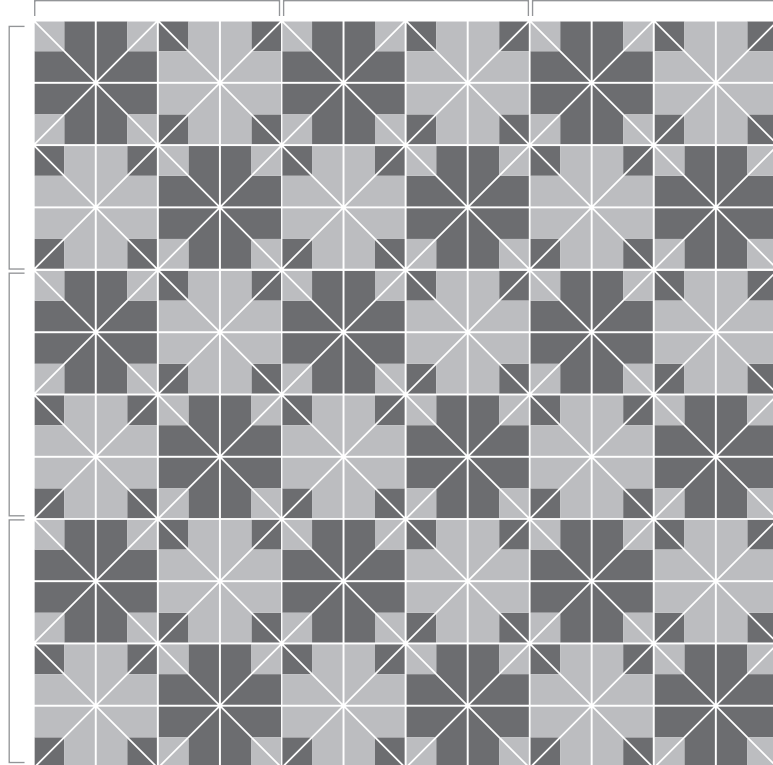
Equal amounts of T1/T2 and T3/T4 are used to complete one pattern unit.

The full pattern unit is repeated on all sides to continue the installation.

32 tiles complete one pattern unit.



3x3 Pattern Units



Dual Glaze Triangles Install Guide



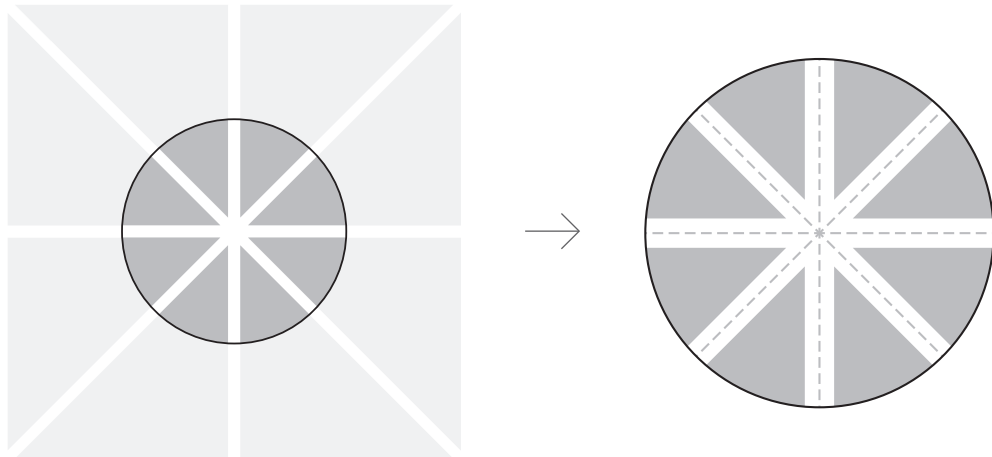
$\frac{1}{8}$ " - $\frac{3}{16}$ " grout line recommended

Starting Your Grid

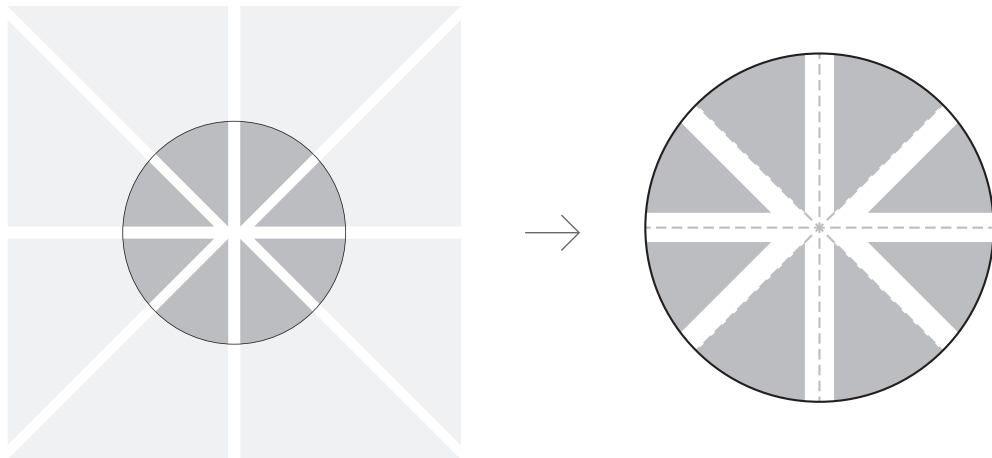
Triangles require a consistent spacing around the corners to maintain your grout lines.

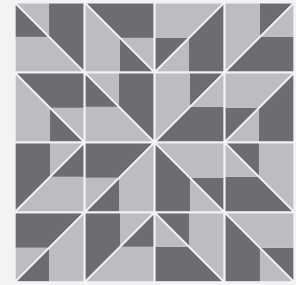
Select a horizontal or vertical orientation, and determine your primary grout lines. It is important to keep the primary lines straight and aligned throughout the installation.

Correct



Incorrect





Dual Glaze Triangles: Facet Pattern

Complexity: High

1/8" – 3/16" grout line recommended

Before You Begin

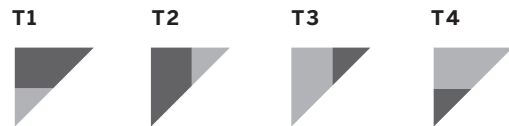
This tile collection is intended to be installed as a pattern and requires a detailed approach best done by a tile professional.

The handmade nature of these tiles means the glaze will have variation in color and texture. We suggest laying out as large of an area of your pattern as possible before setting any tiles, so that you may evenly blend the natural variation throughout your installation area. This will also allow you to check that the pattern comes together properly.

Pattern Components




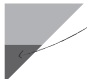
Your tile order will come in boxes of **T1, T2, T3,** and **T4** tile. We highly encourage making a master set of these four tiles—they are easiest to identify when the 90° corner is kept consistently in the top left. Use the quick guide below to identify tile, and keep them for reference as you work.

QUICK GUIDE



All patterns are made up of equal quantities of these 4 tile components (T1–T4).

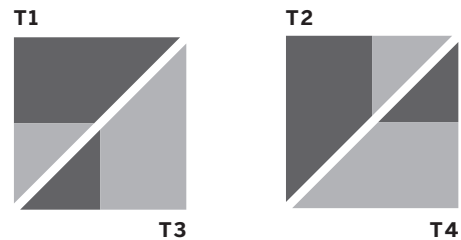
Identifying Tiles

- T1**  The **larger portion** of glaze overlay is located on the **top side** of the tile.
- T2**  The **larger portion** of glaze overlay is located on the **left side** of the tile.
- T3**  The **smaller portion** of glaze overlay is located on the **right side** of the tile.
- T4**  The **smaller portion** of glaze overlay is located on the **bottom side** of the tile.

Step 1

Once the tile is sorted by T1, T2, T3 and T4, the pattern begins with two main building blocks: **T1/T3** tiles, and **T2/T4** tiles.

These triangles will continually be grouped to form the squares to the right, and used to build the larger pattern unit.



Dual Glaze Triangles: Facet Pattern

Complexity: High



1/8" - 3/16" grout line recommended

Step 2

To start building the pattern unit, it is important to understand the overall rhythm of how the pattern takes shape with the building blocks from Step 1. This section only uses **T1/T3**.

This block contains two of the same sections, they sit in adjacent corners from each other.



Step 3

Continue building the block started in Step 2 with **T2/T4** tiles. These will occupy the other corners of the block

This block contains two of the same sections, they sit in adjacent corners from each other.



Dual Glaze Triangles: Facet Pattern

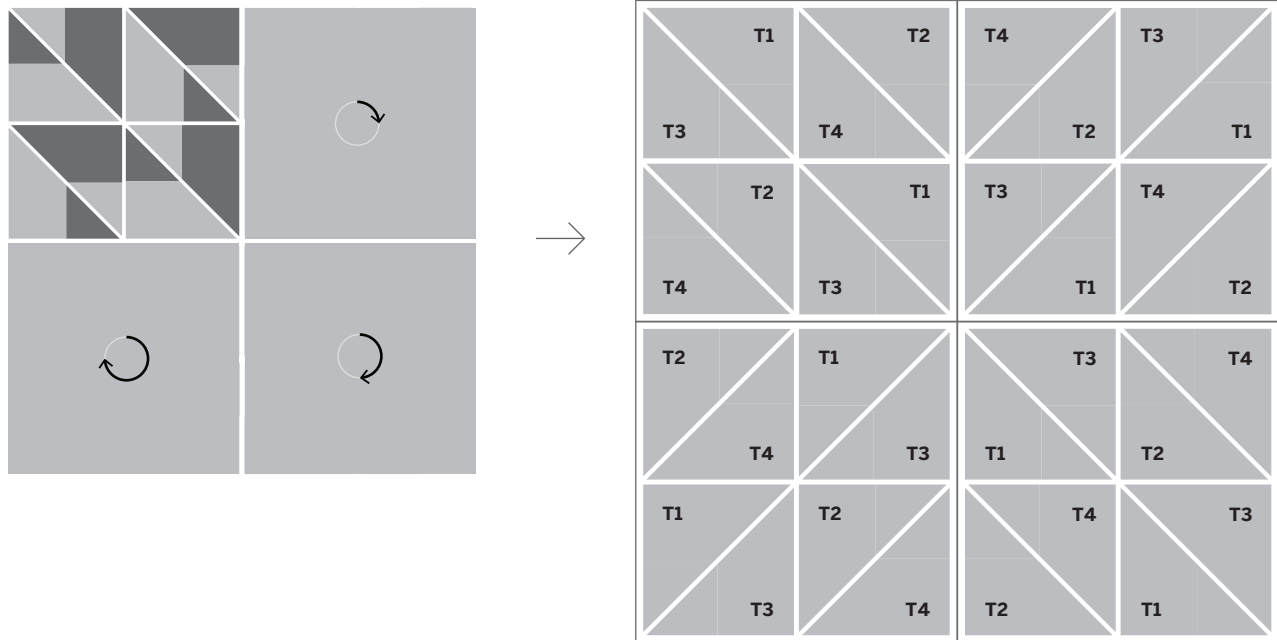
Complexity: High



1/8" - 3/16" grout line recommended

Step 4

After completing one block in Step 3, this will be repeated 3 more times and rotated to build a full pattern unit.



Dual Glaze Triangles: Facet Pattern

Complexity: High

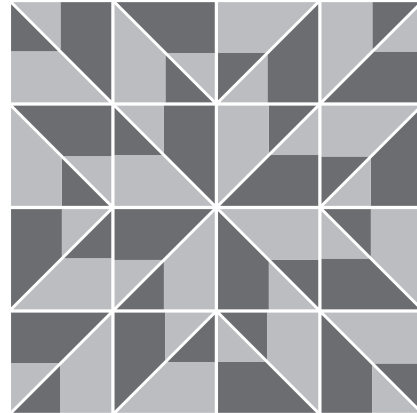


1/8" - 3/16" grout line recommended

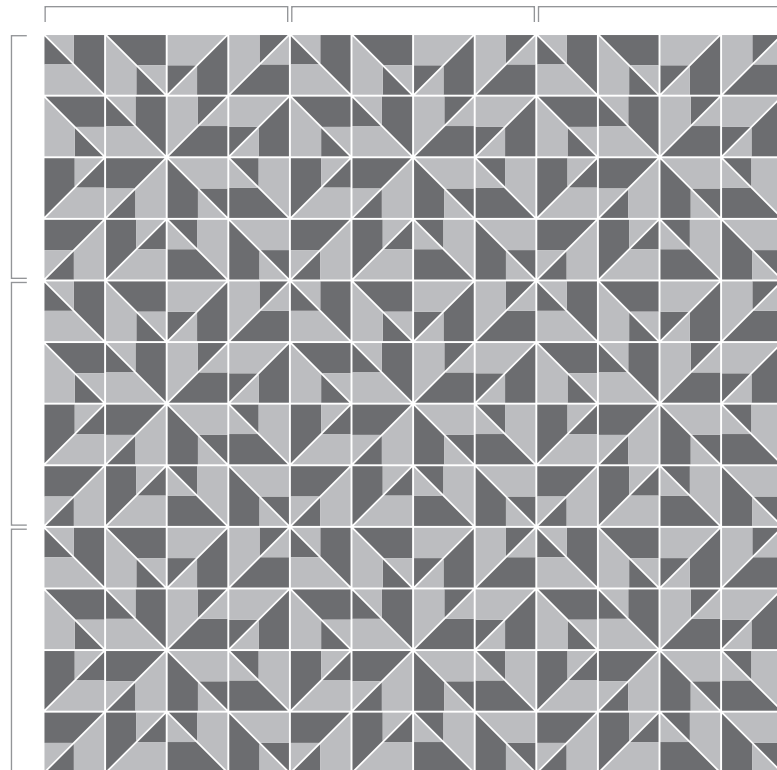
Step 5

Once you have a complete pattern unit, the installation is completed by repeating units in the same orientation.

32 tiles complete one pattern unit.



3x3 Pattern Units



Dual Glaze Triangles Install Guide



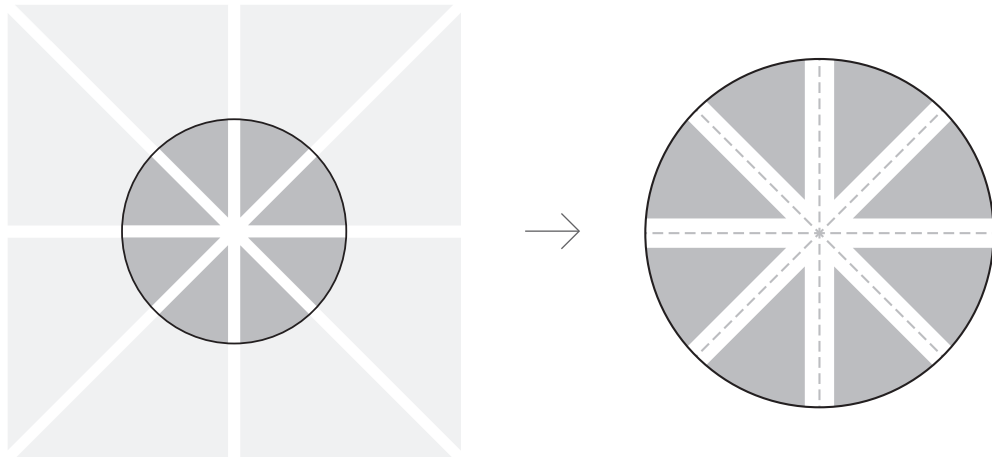
$\frac{1}{8}$ " – $\frac{3}{16}$ " grout line recommended

Starting Your Grid

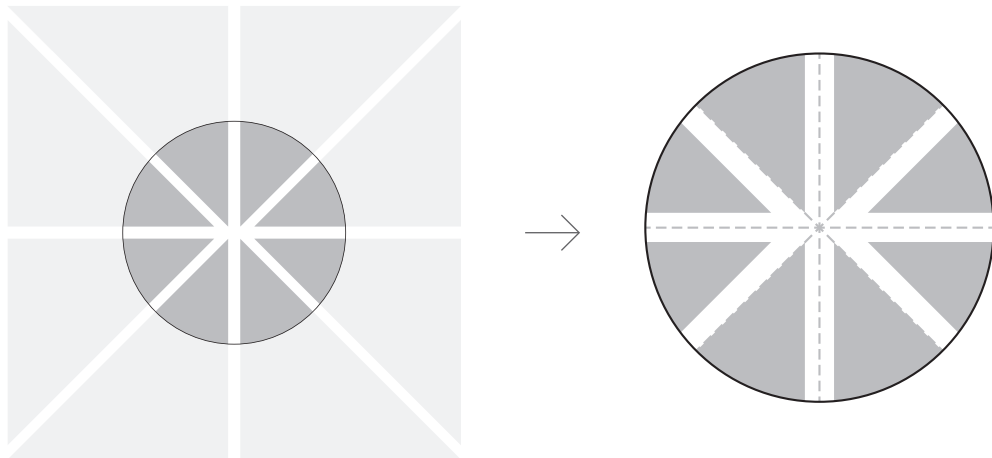
Triangles require a consistent spacing around the corners to maintain your grout lines.

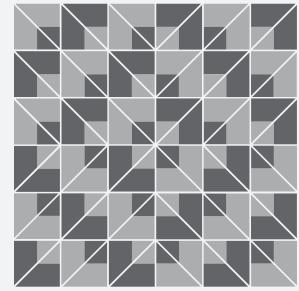
Select a horizontal or vertical orientation, and determine your primary grout lines. It is important to keep the primary lines straight and aligned throughout the installation.

Correct



Incorrect





Dual Glaze Triangles: Kilim Pattern

Complexity: High

1/8" – 3/16" grout line recommended

Before You Begin

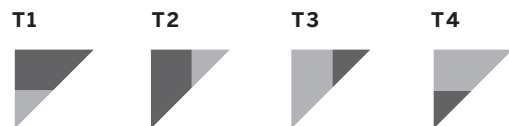
This tile collection is intended to be installed as a pattern and requires a detailed approach best done by a tile professional.

The handmade nature of these tiles means the glaze will have variation in color and texture. We suggest laying out as large of an area of your pattern as possible before setting any tiles, so that you may evenly blend the natural variation throughout your installation area. This will also allow you to check that the pattern comes together properly.

Pattern Components





Your tile order will come in boxes of **T1, T2, T3, and T4** tile. We highly encourage making a master set of these four tiles—they are easiest to identify when the 90° corner is kept consistently in the top left. Use the quick guide below to identify tile, and keep them for reference as you work.

QUICK GUIDE



All patterns are made up of equal quantities of these 4 tile components (T1–T4).

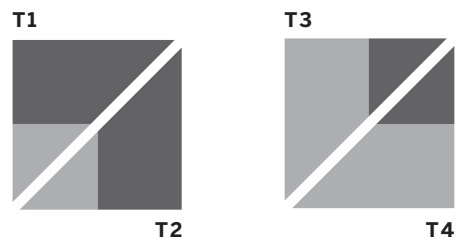
Identifying Tiles

- T1**  The **larger portion** of glaze overlay is located on the **top side** of the tile.
- T2**  The **larger portion** of glaze overlay is located on the **left side** of the tile.
- T3**  The **smaller portion** of glaze overlay is located on the **right side** of the tile.
- T4**  The **smaller portion** of glaze overlay is located on the **bottom side** of the tile.

Step 1

Once the tile is sorted by T1, T2, T3 and T4, the pattern begins with two main building blocks: **T1/T2** tiles, and **T3/T4** tiles.

These triangles will continually be grouped to form the squares to the right, and used to build the larger pattern unit.



Dual Glaze Triangles: Kilim Pattern

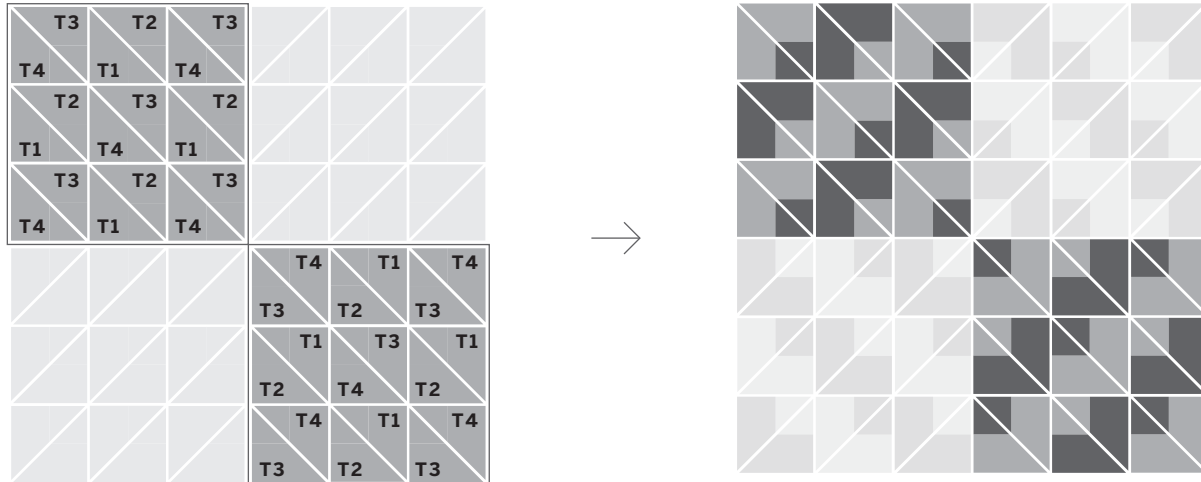
Complexity: High



1/8" - 3/16" grout line recommended

Step 2

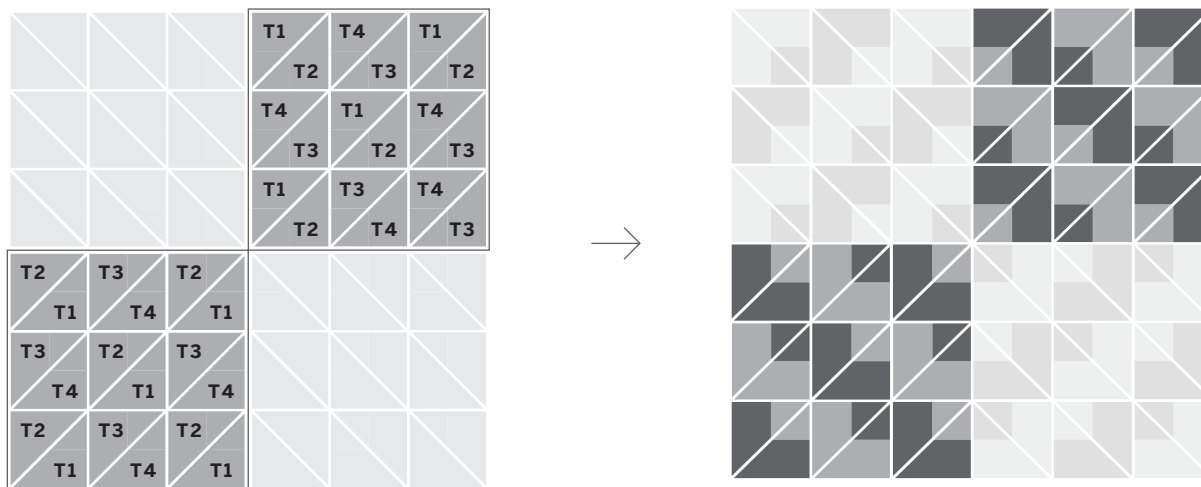
To start building the pattern unit, look closely at the alternating **T1/T2** and **T3/T4** placement. **T1/T2** never sit perpendicular to another **T1/T2**.



Note the orientation of T3/T4, along with T1/T2 is flipped between the two blocks

Step 3

To complete the pattern unit, the next two square blocks are built similarly with alternating **T1/T2** and **T3/T4**. Note the grout lines are oriented in the opposite direction as those in Step 2.



Note the orientation of T3/T4, along with T1/T2 is flipped between the two units

Dual Glaze Triangles: Kilim Pattern

Complexity: High

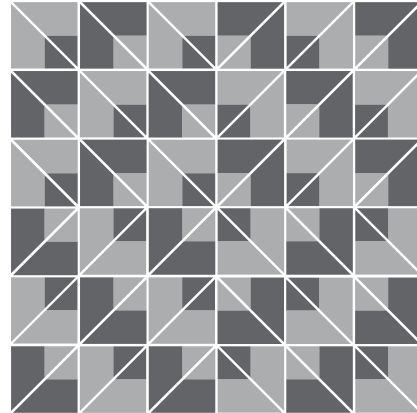
$\frac{1}{8}$ " - $\frac{3}{16}$ " grout line recommended



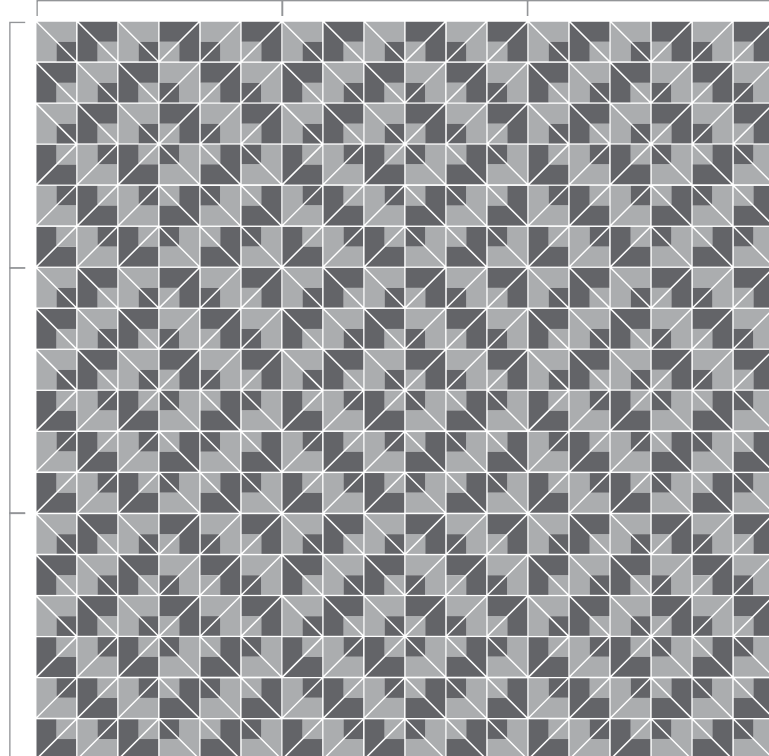
Step 4

Once you have a full pattern unit, the pattern is continued by repeating units in the same orientation.

72 tiles complete one pattern unit.



3x3 Pattern Units



Dual Glaze Triangles Install Guide



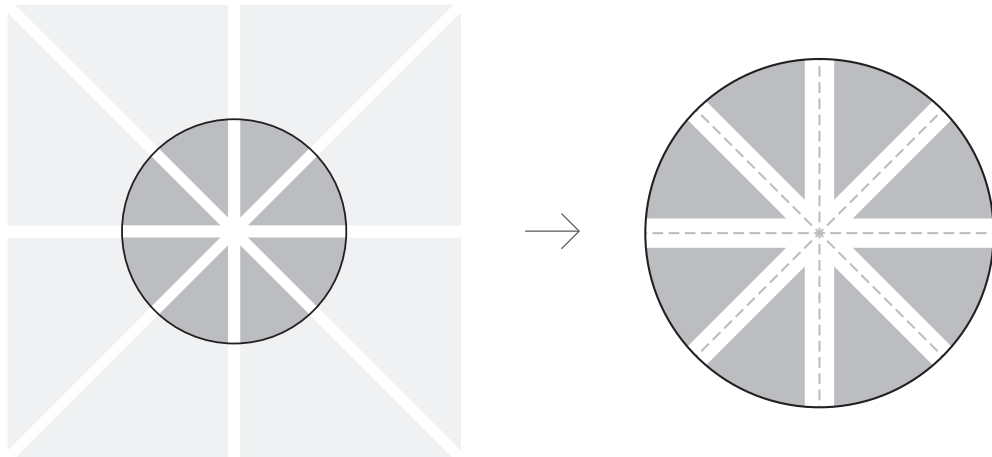
$\frac{1}{8}$ " – $\frac{3}{16}$ " grout line recommended

Starting Your Grid

Triangles require a consistent spacing around the corners to maintain your grout lines.

Select a horizontal or vertical orientation, and determine your primary grout lines. It is important to keep the primary lines straight and aligned throughout the installation.

Correct



Incorrect

